

Quilt turns out picture perfect

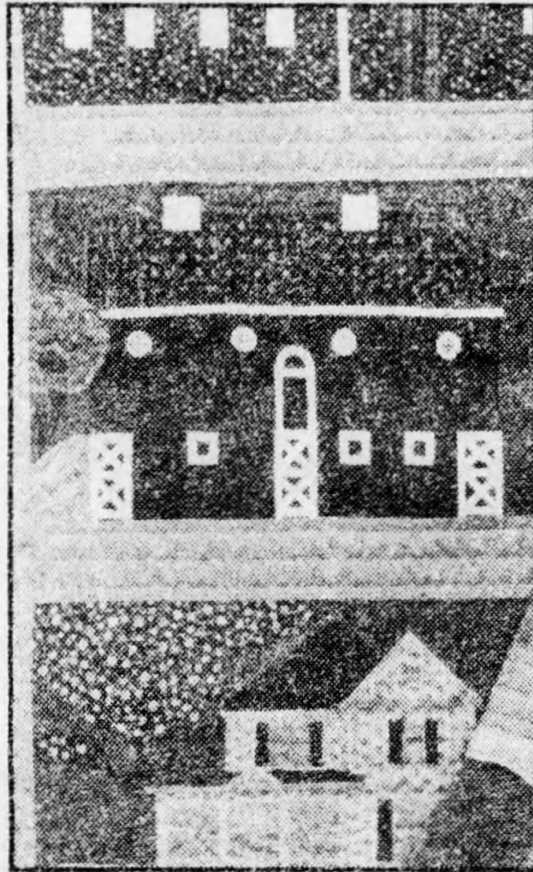
Rita Shimota's quilt began as a family "picture quilt," with fabric and embroidery scenes of the family's house, barn and chicken coop.

"After five or six squares, I ran out of buildings," Mrs. Shimota explained, so she moved on to other houses and buildings around Withrow, a small town between Stillwater and Hugo.

The result earned her a sweepstakes in the Washington County fair and a second place at the Minnesota State Fair. The quilt is displayed on a brass bed in one of the show cases in the Creative Activities building.

The quilt squares show the Shimota barn with hex signs (painted on the real barn by her husband, a designer), the Withrow depot, general merchandise store, state bank, school and private homes. Fair workers who arranged the displays were impressed with the selection of color and fabrics that made up the richly detailed scenes.

"I spent most of the time selecting colors and fabrics," Mrs. Shimota said. Some fabrics came from stores, some from friends' remnants, some is



A scene from Rita Shimota's quilt.

cloth brought by friends from Czechoslovakia. "There's a little of everybody I know in the quilt."

This is the third quilt she has made and the first she has entered into competition. She got into quilt-making and other rural Americana activities after she, her husband and four children (now 21 to 14 years old) moved from suburban Minnetonka to

Quilts continued on page 9C